

**Report for:** Record of Decision Taken Under Delegated Authority

**Item Number:**

**Title:** Proposed waiting and loading restrictions and parking place changes at 13 locations (minor works batch 2021-02) across the borough

**Request authorised by:** Head of Service for Highways and Parking: Ann Cunningham



**Lead Officer:** Daniel Bingham  
Parking Schemes  
Level 1 (South), River Park House, 225 High Road,  
Wood Green, N22 8HQ  
daniel.bingham@haringey.gov.uk

**Wards Affected:** Bruce Grove, Fortis Green, Muswell Hill, Tottenham Hale, Crouch End, Bounds Green, White Hart Lane, Seven Sisters and Harringay

**Report for Key / Non-Key Decision:** Non-key decision

## 1 Purpose

- 1.1 The purpose of this report is to provide details of the proposals, to report the responses received during the consultation period and to seek approval to proceed with the recommendations as set out in Section 11 of this report.
- 1.2 During May and June 2021, the Council undertook a statutory consultation on proposals to introduce waiting and loading restrictions and parking place changes at various locations across the borough as detailed in table 1 section 3.

## 2 Background

- 2.1 The Council receives many requests to introduce new, or to amend existing parking restrictions to address concerns relating to parking pressures including inconsiderate and obstructive parking. These concerns may originate from a variety of sources such as residents, businesses, elected representatives, community groups and other public service providers, or the emergency services.
- 2.2 Inconsiderate and obstructive parking can be a cause of concern to road users of all types. As well as affecting other motorists, it can result in reduced sight lines contributing to an increased risk of collisions impacting on the road safety of pedestrians and cyclists. Poorly parked vehicles may impede access and contribute to road congestion. This can impact on the movement of emergency services, public transport, waste collection and larger delivery vehicles.

## 3 Proposals

- 3.1 Table 1 below lists 13 locations where concerns or requests have been raised with regards to parking restrictions or parking places. Each location has been investigated and the table outlines the proposals we are seeking to approve. The designs for each location are contained within **Appendix 1**.

Table 1

Reference	Location	Description	Operation hours	Reason for proposal
(a)	Vartry Road N15 – outside nos. 2-4	Reduce existing permit holders only bay by 3.2 metres, therefore extending existing double yellow line by this length	At all times	To provide adequate space for refuse storages to be installed on the public highway

Reference	Location	Description	Operation hours	Reason for proposal
(b)	Fortis Green N10 – junction with Midhurst Avenue N10	Extend existing double yellow line by 12.4 metres	At all times	To provide adequate space and improve sightlines for pedestrians, cyclists and other road users manoeuvring Fortis Green
(c)	Park Road N8 – outside no. 59	Convert timed loading restrictions to no loading at any time restrictions	At all times	To facilitate the removal of a loading bay by improving sightlines for pedestrians, cyclists and other road users manoeuvring Park Road
(d)	Cecile Park N8 – rear fire exit to Kestrel House School located on Crouch Hill	Reduce existing resident parking bay by 3 metres and introduce a double yellow line for this length	At all times	To maintain clear emergency access to the rear of Kestrel House School
(e)	Greyhound Road N17 – outside no. 60	Remove existing single yellow line by its entire length and extend existing permit holder bay to this length	Zone hours	To improve parking opportunities for residents by removing a section of single yellow line that is no longer required

Reference	Location	Description	Operation hours	Reason for proposal
(f)	Broadwater Road N17 – outside nos. 73 to 75	Remove existing double yellow line by its entire length and extend existing permit holder bay to this length	Zone hours	To improve parking opportunities for residents by removing a section of double yellow line that is no longer required
(g)	White Hart Lane N17 – outside no. 325, towards opposite no. 432	Pay by phone bay to change from 2hrs max stay to 4hrs max stay from the eastern property boundary of no. 325 south east for approximately 64 metres	Zone hours with a max stay of 4 hours	To improve parking opportunities for visitors of White Hart Lane
(h)	Gospatrick Road N17 – outside nos. 129-135	Permit holder only bay to be split into a section of shared use, resident permit holder and pay by phone only	Zone hours with a max stay of 4 hours and no return of 1 hour	To improve parking opportunities for visitors of Gospatrick Road
(i)	Gospatrick Road N17 – outside nos. 137-141	Permit holder only bay to be split into a section of pay by phone only	Zone hours with a max stay of 4 hours and no return of 1 hour	To improve parking opportunities for visitors of Gospatrick Road

Reference	Location	Description	Operation hours	Reason for proposal
(j)	Allison Road N8 – adjacent 575 Green Lanes N8	Convert existing shared use, pay by phone and resident permit bay to no stopping except ambulances bay, 6 metres in length. Exemptions will apply to private ambulances registered with the Medi-Parc clinic.	Mon-Sat, 8am-6.30pm except ambulances	To facilitate the use of private ambulances registered with Medi-Parc clinic
(k)	Ashley Road N17 – north side (see design in appendix 1)	At any time loading restrictions along all sections of double yellow lines	At all times	To improve sightlines for cyclists, pedestrians and other road users
(l)	Ashley Road N17 – north side outside <b>Harris Academy</b> (see design in appendix 1)	School keep clear restrictions operating alongside existing single yellow line restrictions outside Harris Academy	School keep clear operating between Mon-Fri, 8am-5pm	To improve sightlines and maintain clear access during peak school operational times
(m)	Wood Vale N10 – outside no. 44	Formalise removal of double yellow line outside dropped kerb of property	Uncontrolled	No longer required

## 4 Statutory Notification

- 4.1 Statutory notifications were undertaken on the proposals detailed in table 1 of section 3, items A to M on 19 May 2021 for a period of 21 days. This adheres to the legal requirements set out in section 7 of this report.
- 4.2 As part of the statutory process a Notice of Proposal was published in the London Gazette, Enfield and Haringey Independent. In addition, the notice was erected on site in the affected streets. The statutory notification consisted of 13 locations.

\*See **Appendix 2** for a copy of the statutory notice of proposal that was advertised.

- 4.3 As part of the statutory process, the views of the following statutory bodies were also sought:
- AA
  - London Transport
  - Police (local)
  - Fire Brigade
  - London Ambulance Service
  - Freight Transport Association
  - Road Haulage Association
  - RAC
  - Metropolitan Police (traffic)
  - London Travel Watch
  - Haringey Cycling Campaign

See **Appendix 3** for a copy of e-mail sent to the above statutory bodies.

## 5 Statutory Notification Feedback

- 5.1 No objections have been received on the 13 proposals listed in table 1 of section 3.

## 6 Chief Financial Officer Comments

- 6.1 The capital costs of waiting, loading, and parking place measures outlined in this report can be met from the Parking Implementation Plan funding which forms part of the 2021-2022 budget.

## 7 Legal Requirements

- 7.1 Before reaching a decision to make the necessary Traffic Management Order to implement or amend a CPZ scheme, the Council must follow the statutory consultation procedures pursuant to the Road Traffic Regulation Act 1984 ("RTRA") (as amended) and the Local Authorities Traffic Orders (Procedure) (England and Wales) Regulations 1996 (as amended). In carrying out the notification the council must comply with the principles ("Sedley Principles") set out also by the courts which are: that notification must be at a time when proposals are still at a formative stage; that the proposer must give sufficient reasons for any proposal to permit of intelligent consideration and response; that adequate time must

be given for consideration and response; and that the product of notification must be conscientiously taken into account in finalising any statutory proposals. All objections received must be properly considered in the light of administrative law principles, Human Rights law and the relevant statutory powers.

7.2 The Council's powers to make Traffic Management Orders arise mainly under sections 6, 9, 45, 46, 122 and 124 and schedules 1 paragraph 8 and 9 of the RTRA.

7.3 By virtue of section 122, the council must exercise its powers under the RTRA 1984 so as to secure the expeditious, convenient and safe movement of vehicular and other traffic including pedestrians, and the provision of suitable and adequate parking facilities on and off the highway. These powers must be exercised so far as practicable having regard to the following matters: -

(a) The desirability of securing and maintaining reasonable access to premises.

(b) The effect on the amenities of any locality affected including the regulation and restriction of heavy commercial traffic so as to preserve or improve amenity.

(c) The national air quality strategy.

(d) Facilitating the passage of public service vehicles and securing the safety and convenience of their passengers.

Any other matters appearing to the council to be relevant.

## 8 Comment of the Head of Legal Services

8.1 Other than the requirements set out in section 7 above there are no other legal implications arising out of this report.

## 9 Equal Opportunities

9.1 During the statutory notification period any interested parties are permitted to make representations regardless of the following protected characteristics: age, disability, gender reassignment or pregnancy and maturity.

9.2 **The Council must, when carrying out the Council's functions (which includes making decisions), have due regard to the needs set out in section 149 of the Equality Act 2010 (the Public Sector Equality Duty ('PSED')). This duty includes having due regard to the need to advance equality of opportunity between persons who share a relevant protected characteristic (including people with a disability) and persons who do not share it. The Council must consider the duty, which is personal to decision makers.**

## 10 Summary

10.1 Items A to M were consulted on proposed changes to waiting, loading and parking place changes between 19 May and 9 June 2021.

10.2 The Council received no objections to the statutory consultation carried out on the 13 proposals listed in Table 1 of section 3.

## **11 Recommendations**

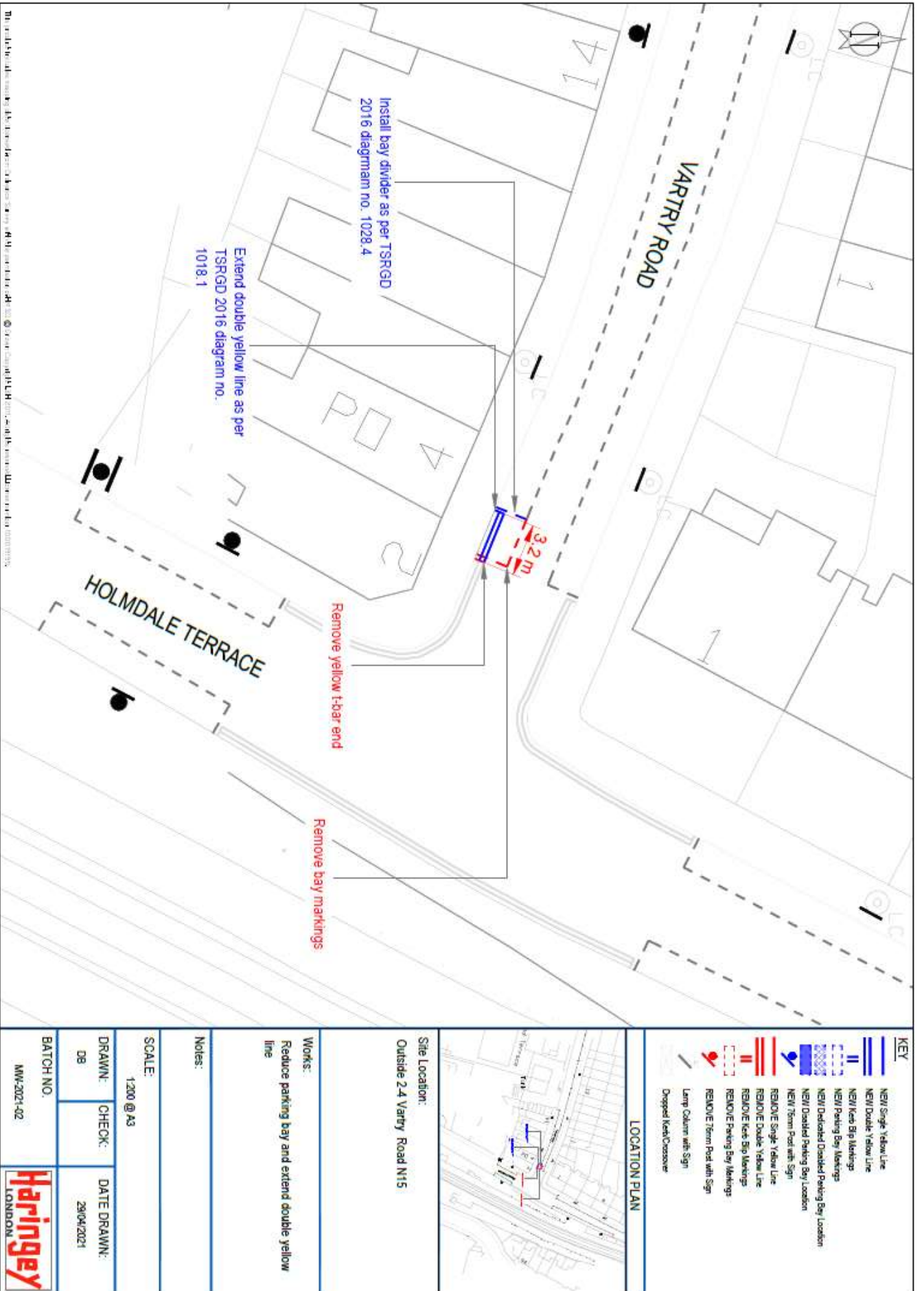
- 11.1 It is recommended that the Head of Service for Highways and Parking approves proposals A through to M as detailed in table 1 section 3 which includes the following:
- 11.2 Introducing parking place changes on the following roads: Vartry Road N15, Cecile Park N8, Greyhound Road N17, Broadwater Road N17, White Hart Lane N17, Gospatrick Road N17 and Allison Road N8
- 11.3 Introducing changes to waiting restrictions on the following roads: Vartry Road N15, Fortis Green N10, Cecile Park N8, Greyhound Road N17, Broadwater Road N17, Ashley Road N17 and Wood Vale N10
- 11.4** Introducing loading changes on the following roads: Park Road N8 and Ashley Road N17
- 11.5 Revoking existing waiting, loading and parking place restrictions to enable the introduction of the above changes.

## **12 List of Appendices**

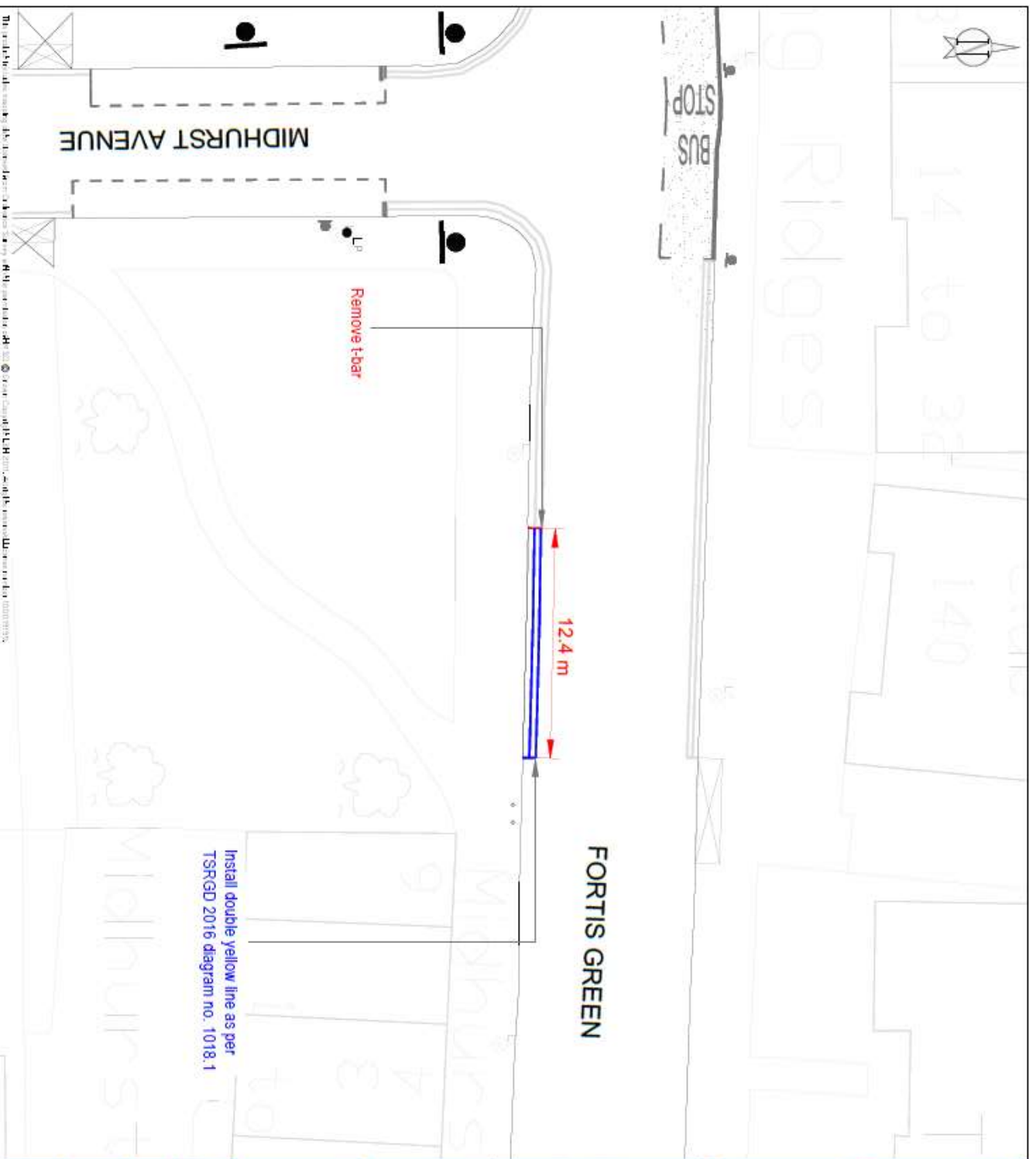
- 1. Detailed designs showing the extents of the proposals stated in section 3.1
- 2. Statutory Consultation Notice of Proposal, advertising the proposals stated in table 1 section 3
- 3. Statutory Consultation notification email sent to statutory bodies stated in section 4.4



# APPENDIX 1



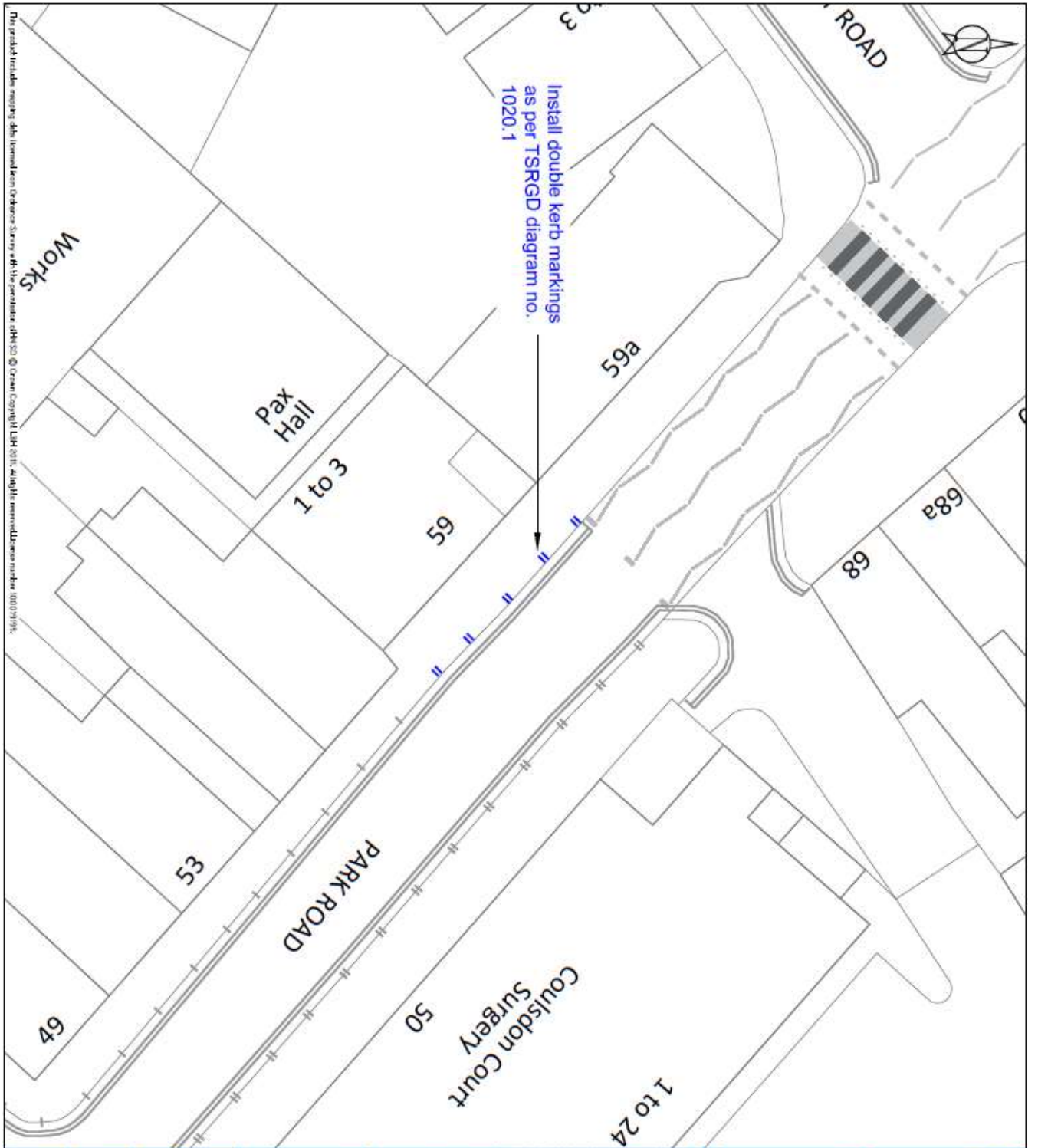
This document is the property of Haringey Council. It is to be used for the purposes for which it is issued and is not to be distributed, copied, or otherwise used in any way without the prior written consent of Haringey Council.



Install double yellow line as per  
TSR/GD 2016 diagram no. 1018.1

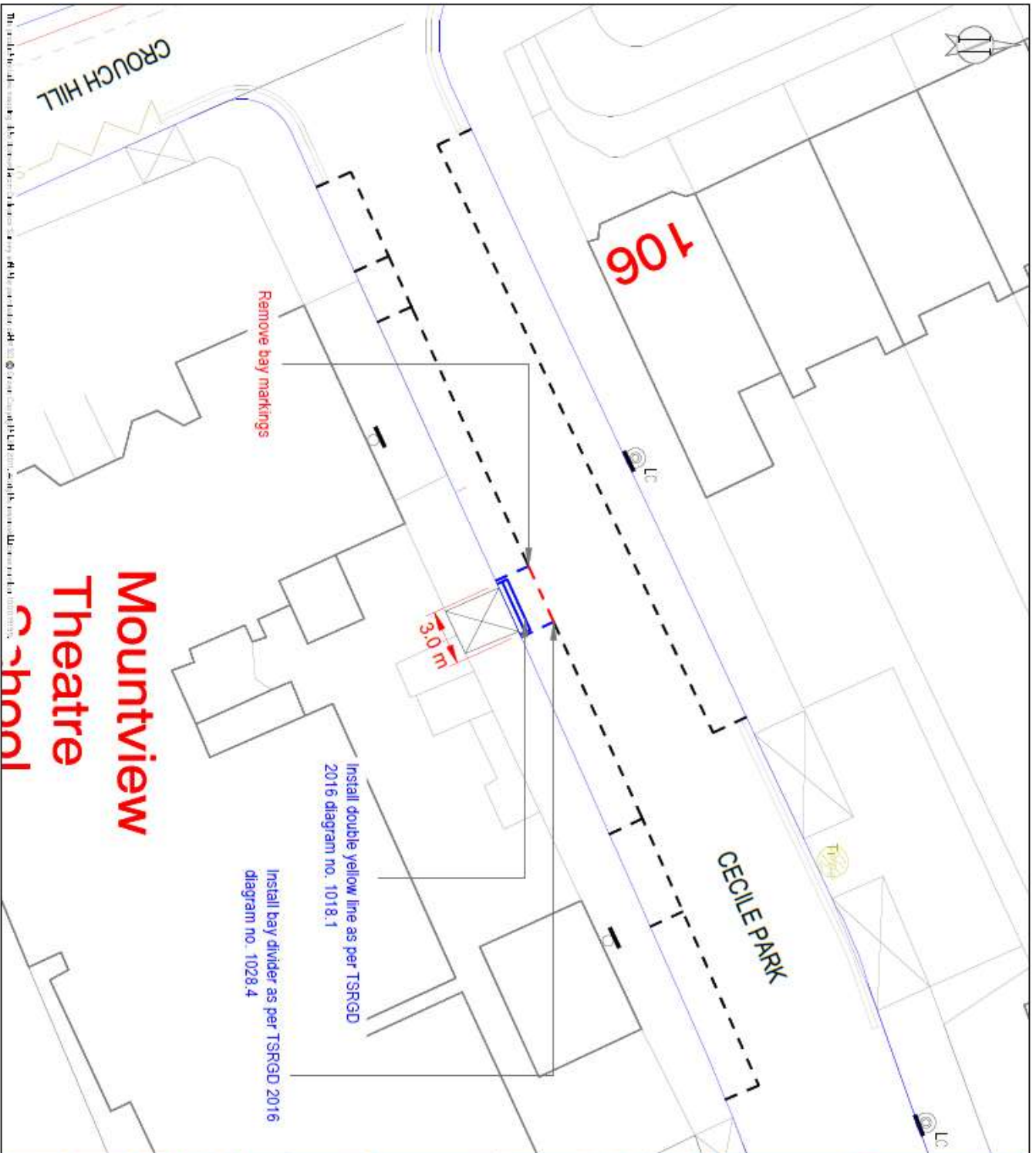
The information on this drawing is the property of Haringey Council and is not to be used for any other purpose without the written consent of Haringey Council.

<p><b>KEY</b></p> <ul style="list-style-type: none"> <li> NEW Single Yellow Line</li> <li> NEW Double Yellow Line</li> <li> NEW Kerb Slip Markings</li> <li> NEW Parking Bay Markings</li> <li> NEW Dedicated Disabled Parking Bay Location</li> <li> NEW Disabled Parking Bay Location</li> <li> NEW Tram Pad with Sign</li> <li> REMOVE Single Yellow Line</li> <li> REMOVE Double Yellow Line</li> <li> REMOVE Kerb Slip Markings</li> <li> REMOVE Parking Bay Markings</li> <li> REMOVE Tram Pad with Sign</li> <li> Lamp Column with Sign</li> <li> Deleted Kerb/Crossover</li> </ul> <p style="text-align: center;"><b>LOCATION PLAN</b></p>	<p><b>Site Location:</b> Junction with Midhurst Avenue and Fortis Green N10</p> <p><b>Works:</b> Extend existing double yellow line</p>	<p><b>Notes:</b> Match length of existing double yellow line opposite</p> <p><b>SCALE:</b> 1:200 @ A3</p> <p><b>DRAWN:</b> DB      <b>CHECK:</b> DB</p> <p><b>DATE DRAWN:</b> 06/05/2021</p> <p><b>BATCH NO.</b> MW-2021-02</p> <p style="text-align: right;"><b>Haringey</b> LONDON</p>
--	---	--



<p><b>KEY</b></p> <ul style="list-style-type: none"> <li> NEW Single Yellow Line</li> <li> NEW Double Yellow Line</li> <li> NEW Kerb Bump Markings</li> <li> NEW Parking Bay Markings</li> <li> NEW Disabled Parking Bay Location</li> <li> NEW Term Post with Sign</li> <li> REMOVE Single Yellow Line</li> <li> REMOVE Double Yellow Line</li> <li> REMOVE Kerb Bump Markings</li> <li> REMOVE Parking Bay Markings</li> <li> REMOVE Term Post with Sign</li> <li> Lamp Column with Sign</li> <li> Dropped Kerb Crossover</li> </ul>	
<p><b>LOCATION PLAN</b></p>	
<p><b>Site Location:</b> OUTSIDE 99 PARK ROAD N8</p>	
<p><b>Works:</b> INSTALL DOUBLE NEW MARKINGS</p>	
<p><b>Notes:</b></p>	
<p><b>SCALE:</b> 1:200 @ A3</p>	
<p><b>DRAWN:</b> CB</p>	<p><b>CHECK:</b></p>
<p><b>DATE DRAWN:</b> 22/04/2021</p>	
<p><b>BATCH NO.:</b> MM-2021-02</p>	

The printed material is subject to change without notice. © Crown Copyright. Licence number: 100019195.



# Mountview Theatre School

106

CECILE PARK

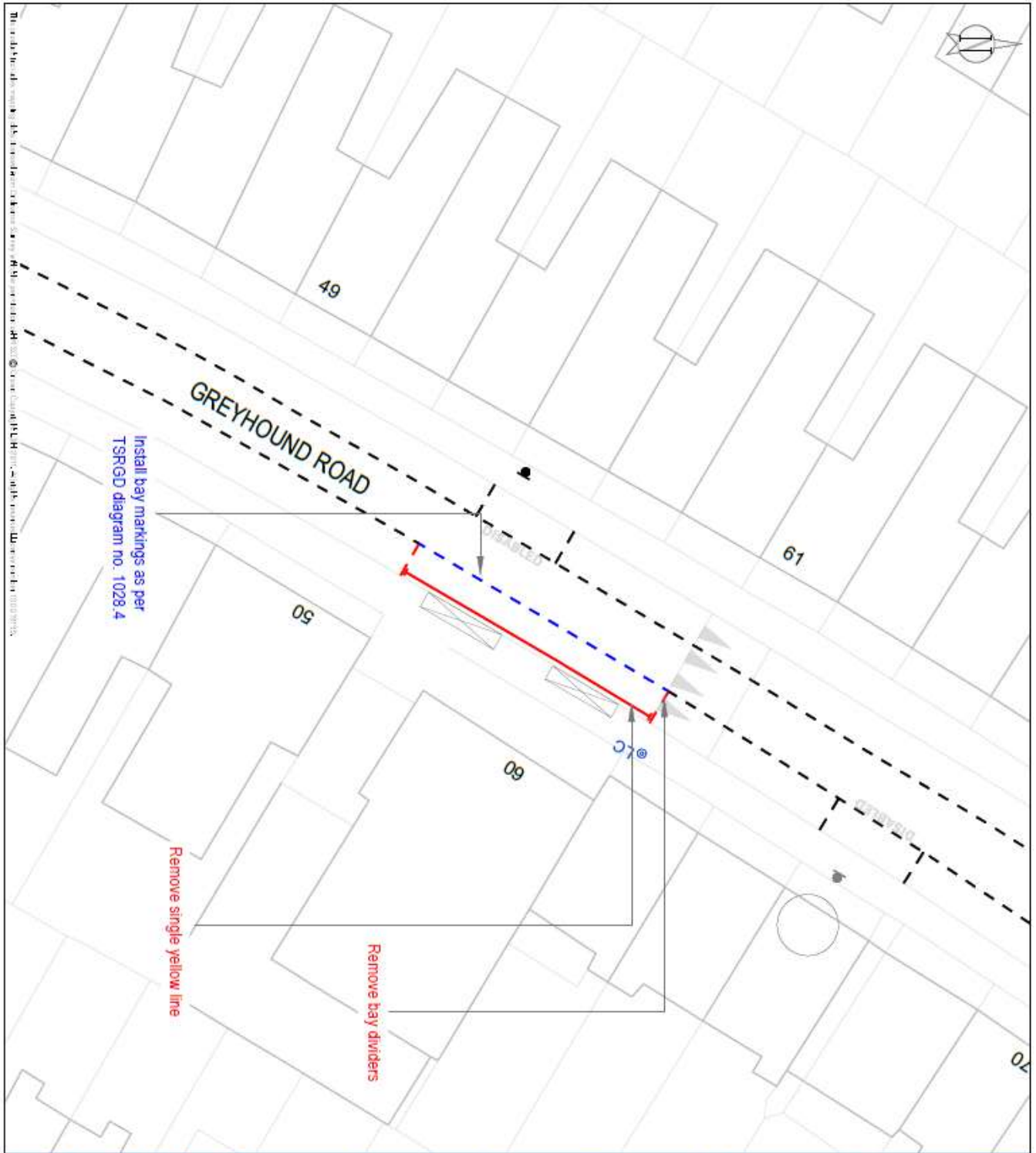
Remove bay markings

Install double yellow line as per TSRGD 2016 diagram no. 1018.1

Install bay divider as per TSRGD 2016 diagram no. 1028.4

3.0m

<p><b>KEY</b></p> <ul style="list-style-type: none"> <li> NEW Single Yellow Line</li> <li> NEW Double Yellow Line</li> <li> NEW Kerb Slip Markings</li> <li> NEW Parking Bay Markings</li> <li> NEW Dedicated Disabled Parking Bay Location</li> <li> NEW Disabled Parking Bay Location</li> <li> NEW Form Post with Sign</li> <li> REMOVE Single Yellow Line</li> <li> REMOVE Double Yellow Line</li> <li> REMOVE Kerb Slip Markings</li> <li> REMOVE Parking Bay Markings</li> <li> REMOVE Form Post with Sign</li> <li> Lamp Column with Sign</li> <li> Dropped Kerb/Crossover</li> </ul> <p><b>LOCATION PLAN</b></p> 	<p><b>Site Location:</b></p> <p>Outside rear emergency exit to Kestrel House School on Cecile Park N8</p> <p><b>Works:</b></p> <p>Reduce parking bay and introduce double yellow line</p>	<p><b>Notes:</b></p> <p>Outside black exit gates, measure 1.5m either side for double yellow line</p> <p><b>SCALE:</b></p> <p>1:200 @ A3</p> <p><b>DRAWN:</b> DB      <b>CHECK:</b>      <b>DATE DRAWN:</b> 28/04/2021</p> <p><b>BATCH NO.:</b> MW-2021-02</p> <p></p>
---	---	---



Install bay markings as per  
TSRGD diagram no. 1028.4

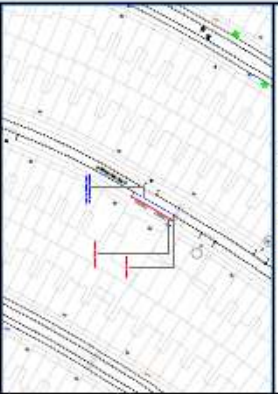
Remove single yellow line

Remove bay dividers

**KEY**

- NEW Single Yellow Line
- NEW Double Yellow Line
- NEW Keyp Btp Markings
- NEW Parking Bay Markings
- NEW Permitted Disabled Parking Bay Location
- NEW Disabled Parking Bay Location
- NEW Tram Road with Sign
- REMOVE Single Yellow Line
- REMOVE Double Yellow Line
- REMOVE Keyp Btp Markings
- REMOVE Parking Bay Markings
- REMOVE Tram Road with Sign
- Lamp Column with Sign
- Deleted Keyp/Overzone

**LOCATION PLAN**



Site Location:  
Outside 60 Greyhound Road N17

Works:  
Remove SYL and join existing parking bays

Notes:

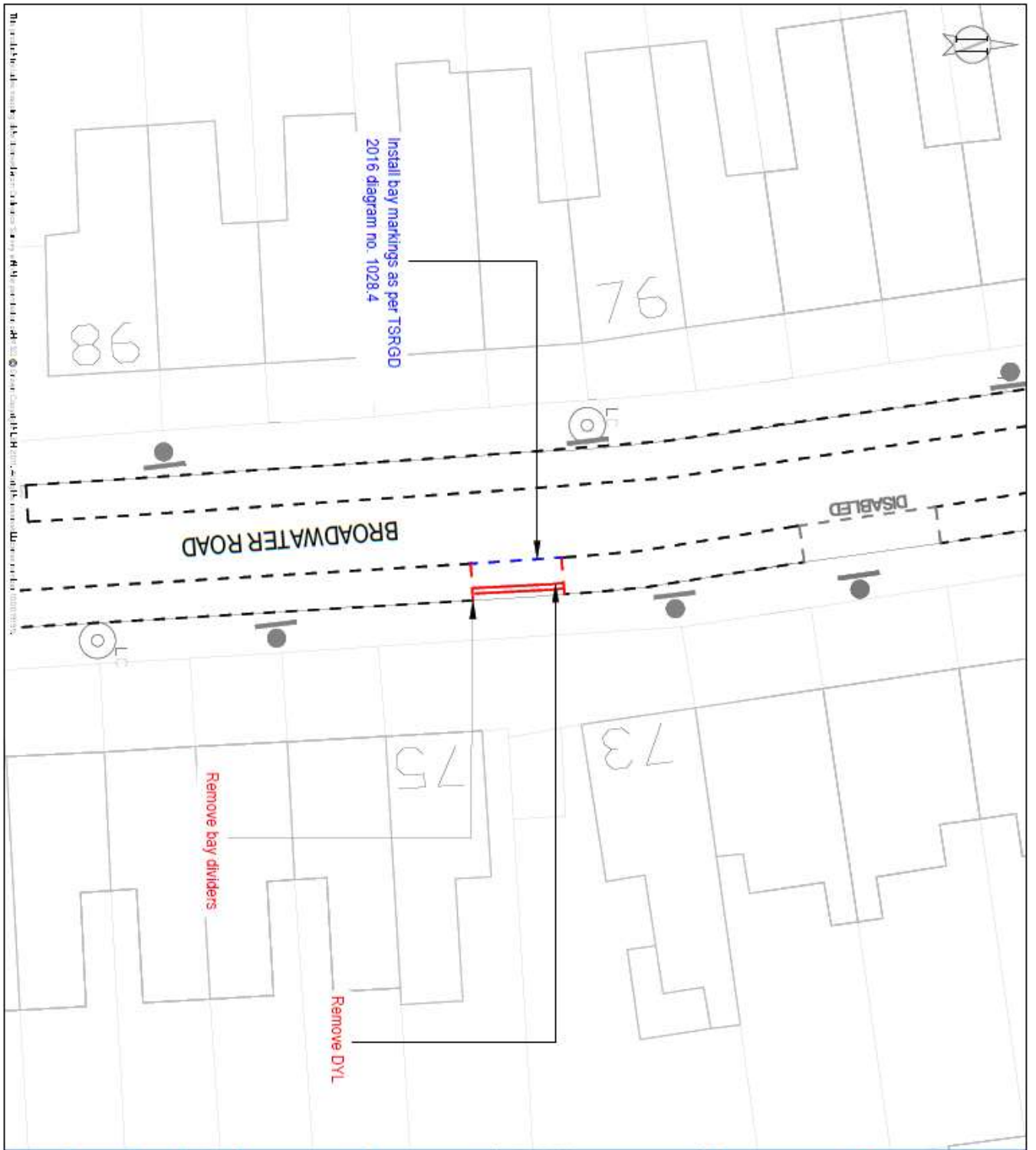
SCALE:  
1:200 @ A3

DRAWN: DB	CHECK:	DATE DRAWN: 29/04/2021
--------------	--------	---------------------------

BATCH NO.  
MM/2021-02

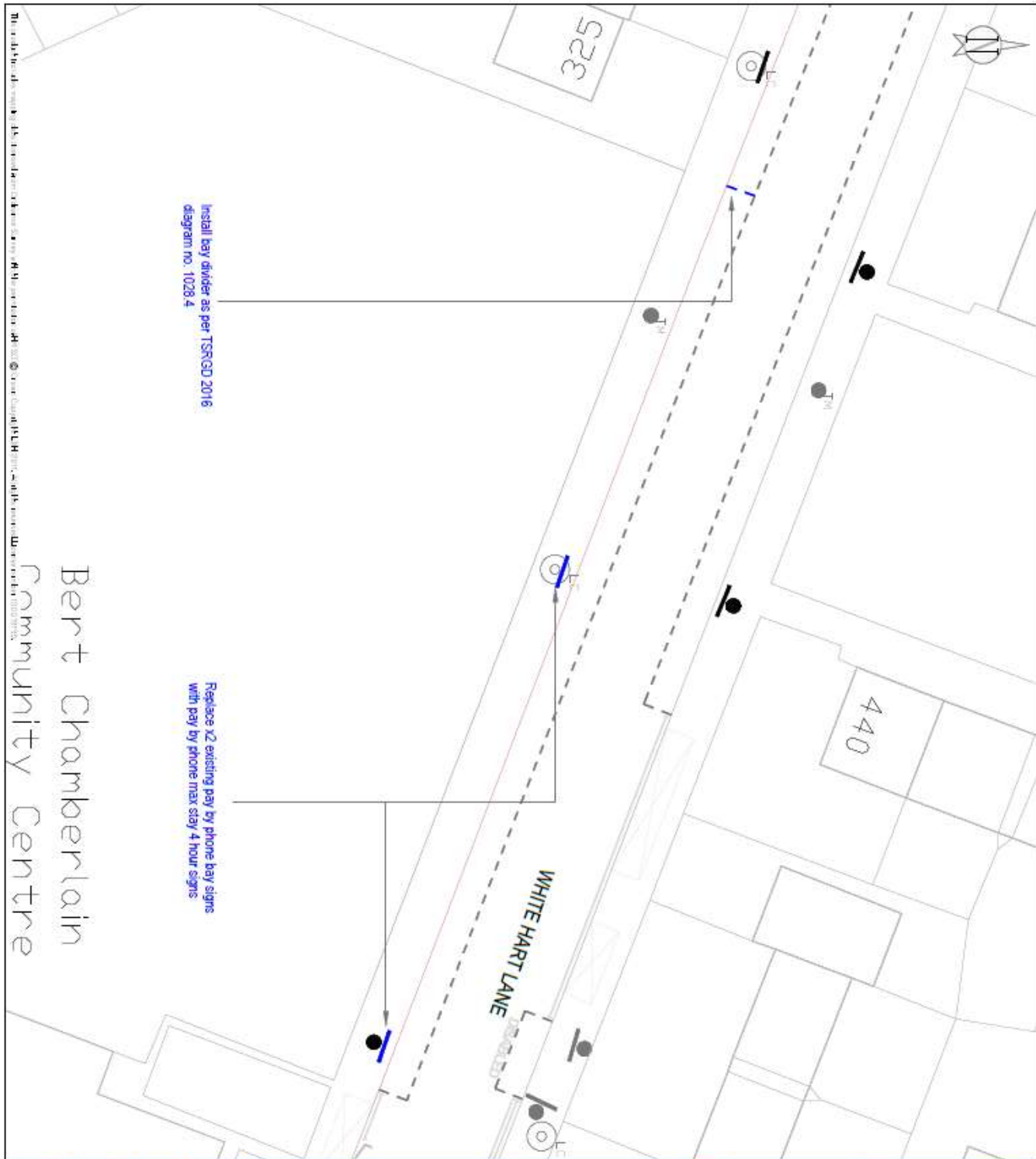


This document is the property of Haringey Council. It is not to be used for any other purpose without the written consent of Haringey Council. © Haringey Council 2021.



This is a preliminary drawing for information only. It is not to be used for construction without the approval of the relevant authorities.

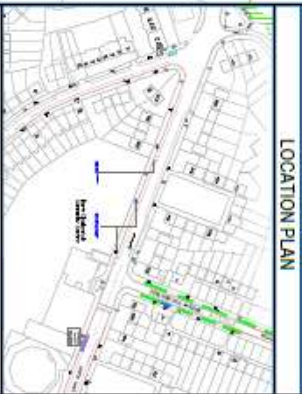
<b>KEY</b> 	
<b>LOCATION PLAN</b>	
<b>Site Location:</b> Outside nos. 73 to 75 Broadwater Road N17	
<b>Works:</b> Remove DYL and extend permit parking bay	
<b>Notes:</b>	
<b>SCALE:</b> 1:200 @ A3	
<b>DRAWN:</b> DB	<b>CHECK:</b>
<b>DATE DRAWN:</b> 27/04/2021	
<b>BATCH NO.</b> MM-2021-02	



# Bert Chamberlain Community Centre

The above details are for the proposed works only. All works shall be subject to the approval of the Council and the relevant authorities.

KEY	
	NEW Single Yellow Line
	NEW Double Yellow Line
	NEW Keypad Bays
	NEW Keypad Bays with Dotted Yellow Line
	NEW Dotted Keypad Bays
	NEW Dotted Keypad Bays with Sign
	REMOVE Single Yellow Line
	REMOVE Double Yellow Line
	REMOVE Keypad Bays
	REMOVE Keypad Bays with Sign
	REMOVE Term Post with Sign
	Lamp Column with Sign
	Dropped Kerb/Overseer



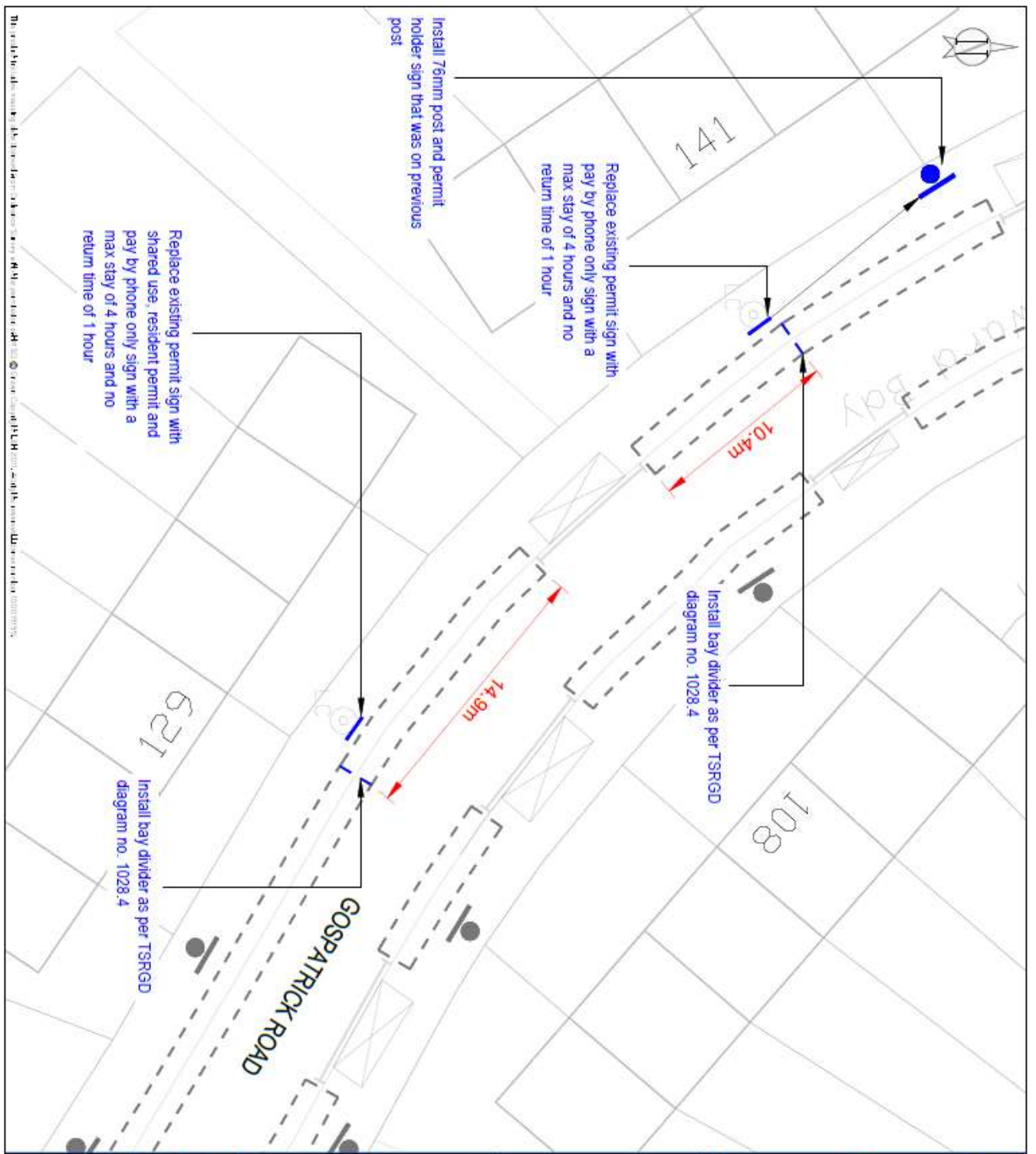
**Site Location:**  
Outside 325, towards opposite 432 White Hart Lane N17

**Works:**  
Install bay divider and replace x2 existing pay by phone bay signs with pay by phone max stay 4 hour signs

**Notes:**

<b>SCALE:</b> 1:250 @ A3	
<b>DRAWN:</b> DB	<b>CHECK:</b>
<b>BATCH NO.:</b> MM-2021-42	<b>DATE DRAWN:</b> 28/04/2021





The author hereby certifies that the information contained in this document is true and correct to the best of his knowledge and belief.

**KEY**

- NEW Single Yellow Line
- NEW Double Yellow Line
- NEW Keyp Sign Markings
- NEW Keyp Sign Markings
- NEW Dedicated Disabled Parking Bay Location
- NEW Disabled Parking Bay Location
- NEW Form Post with Sign
- REMOVE Single Yellow Line
- REMOVE Double Yellow Line
- REMOVE Keyp Sign Markings
- REMOVE Keyp Sign Markings
- REMOVE Form Post with Sign
- REMOVE Form Post with Sign
- REMOVE KeypCrossover



**Site Location:**  
 Outside nos: 129-135 and nos: 137-141  
 Gospatrick Road N17

**Works:**  
 Convert section of permit bays into resident and PBP shared use and PBP only bay

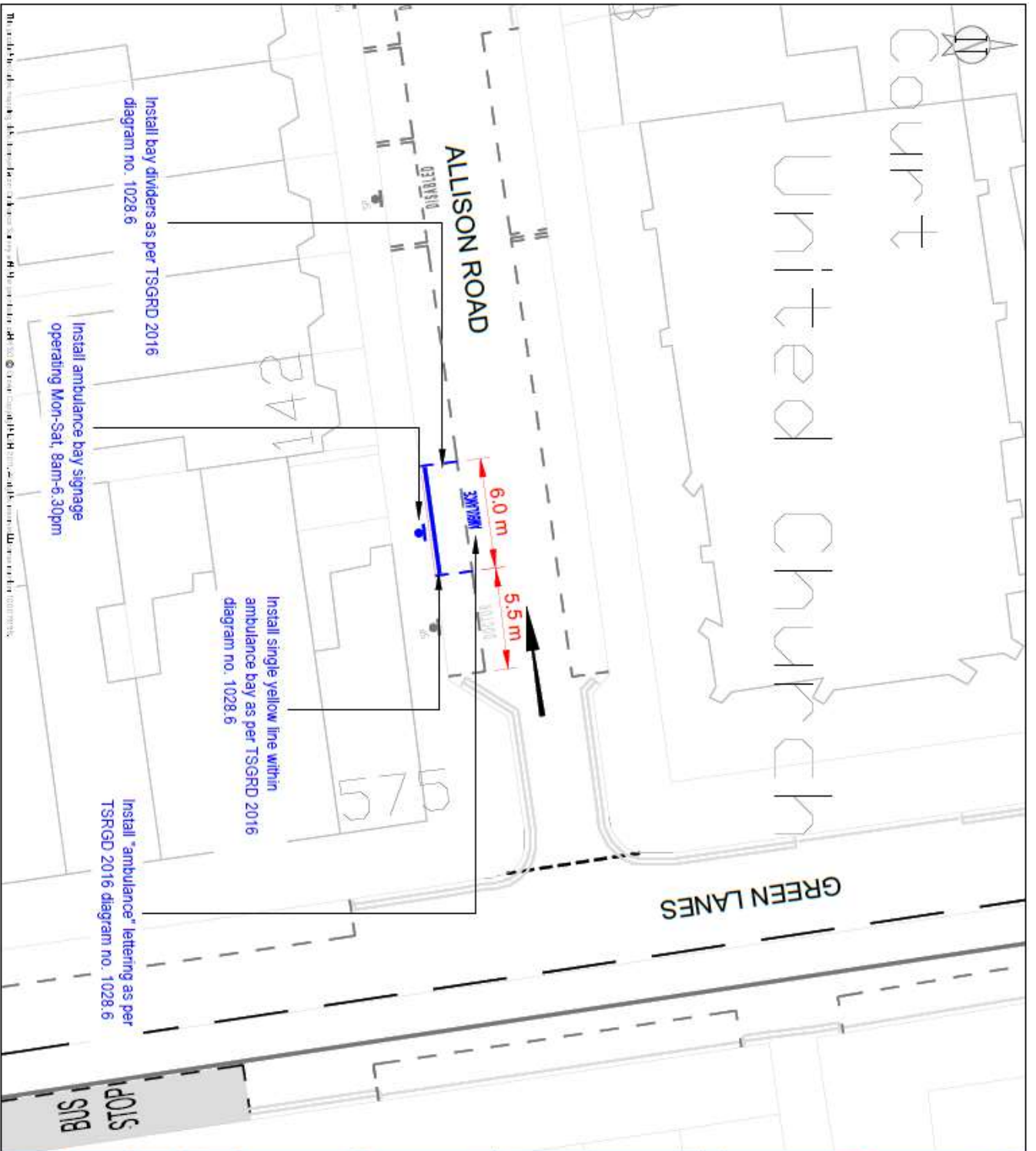
**Notes:**

**SCALE:**  
1:200 @ A3

<b>DRAWN:</b> DB	<b>CHECK:</b>	<b>DATE DRAWN:</b> 26/04/2021
<b>BATCH NO.</b> MW-2021-02		







KEY	
	NEW Single Yellow Line
	NEW Double Yellow Line
	NEW Keo Btp Markings
	NEW Parking Bay Markings
	NEW Dedicated Disabled Parking Bay Location
	NEW Disabled Parking Bay Location
	NEW Term Post with Sign
	REMOVE Single Yellow Line
	REMOVE Double Yellow Line
	REMOVE Keo Btp Markings
	REMOVE Parking Bay Markings
	REMOVE Term Post with Sign
	Lamp Column with Sign
	Dropped Kerb/Crossver

LOCATION PLAN	
	Site Location: Adjacent 575 Green Lanes N8 on Allison Road N8

Works:	
Install ambulance bay next to existing doctors bay with a single yellow line within the bay and install 76mm post with ambulance bay signage, operating between Mon-Sat, 8am-6.30pm	Notes:

SCALE:	
1:200 @ A3	

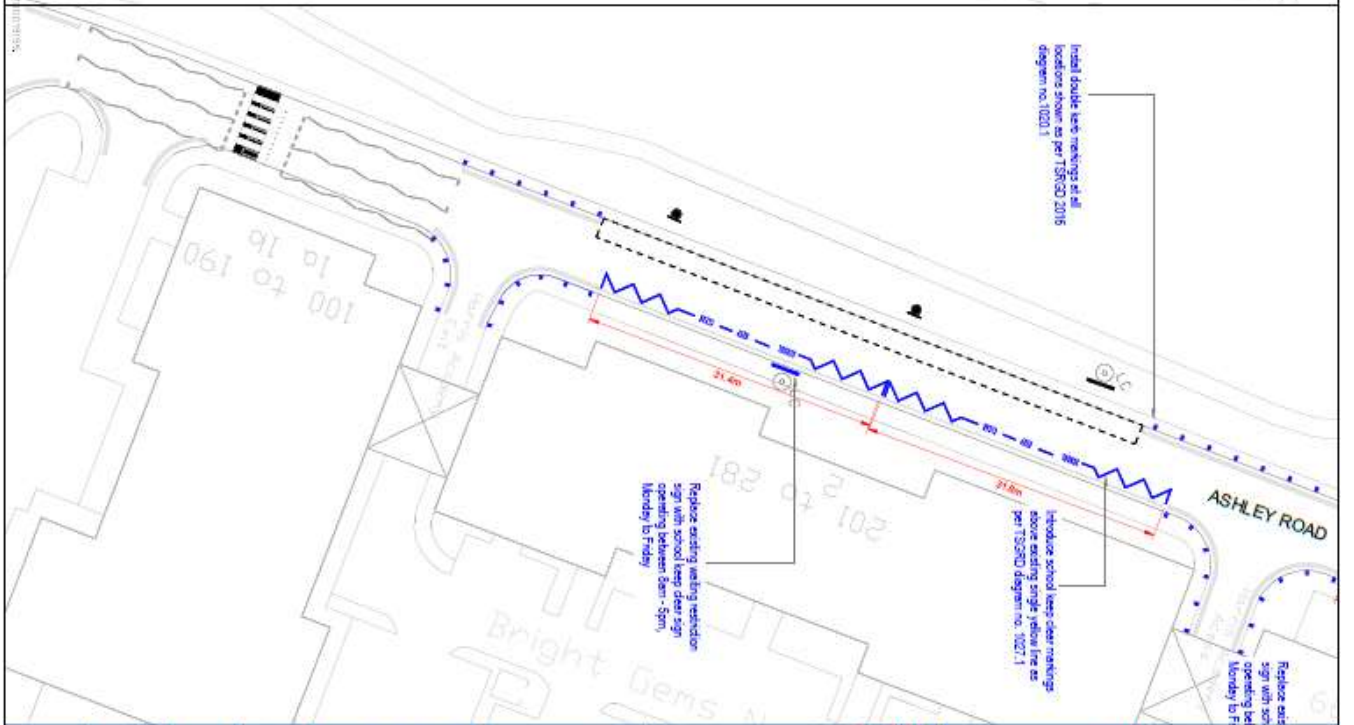
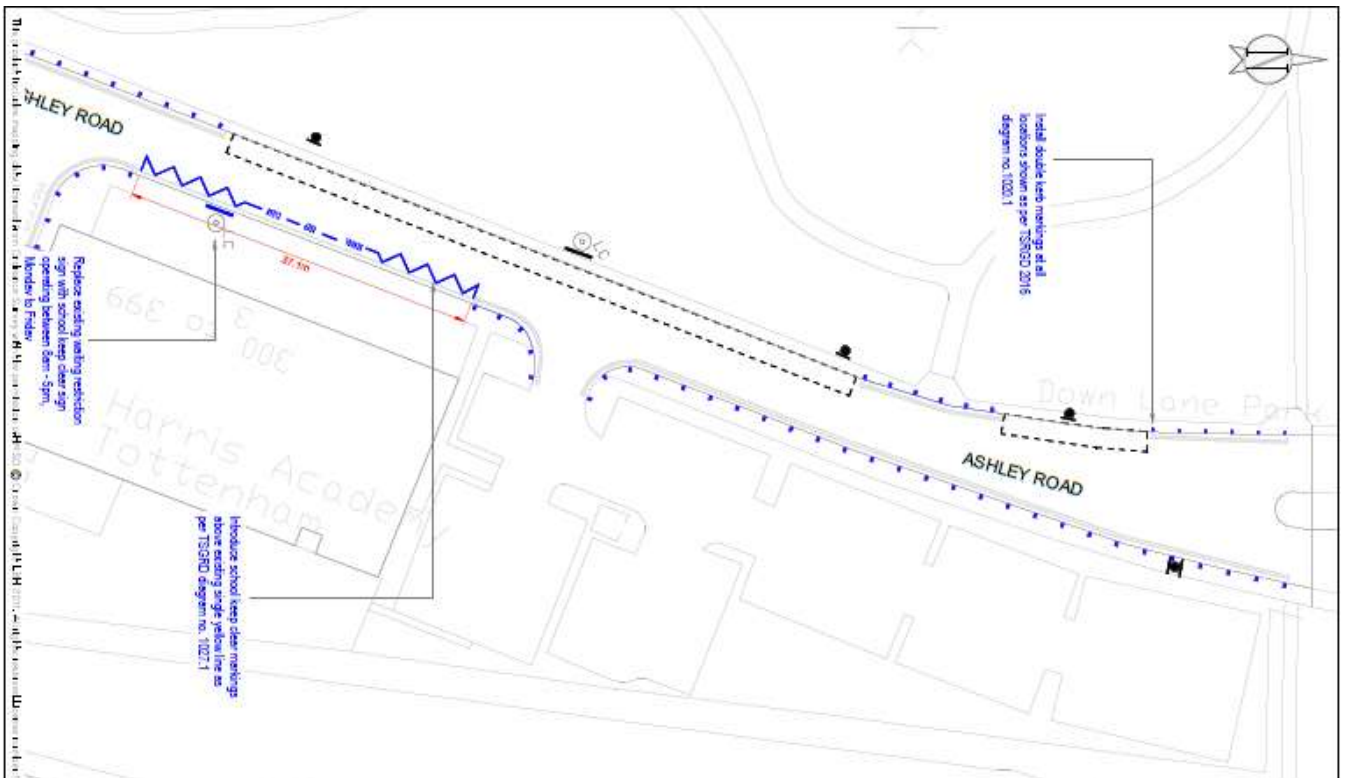
DRAWN:	CHECK:	DATE DRAWN:
DB		14/05/2021

BATCH NO.	
MM-2021-02	

--



**KEY**

- NEW Single Yellow Line
- NEW Double Yellow Line
- NEW Kerb Slip Markings
- NEW Parking Bay Markings
- NEW Dedicated Disabled Parking Bay Location
- NEW Disabled Parking Bay Location
- NEW Tram Stop with Sign
- REMOVE Single Yellow Line
- REMOVE Double Yellow Line
- REMOVE Kerb Slip Markings
- REMOVE Parking Bay Markings
- REMOVE Tram Stop with Sign
- Lamp Column with Sign
- Deleted Kerb/Crossover



Site Location:  
North of Ashley Road N17

**Works:**

Install double kerb blips along all double yellow lines in drawing. Install school keep clear markings above single yellow lines and install school keep clear signs operating Mon-Fri, 8am - 5pm

**Notes:**

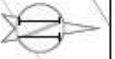
Single yellow line to remain under school keep clear

**SCALE:**

1:500 @ A3

<b>DRAWN:</b>	<b>CHECK:</b>	<b>DATE DRAWN:</b>
DB		05/05/2021

<b>BATCH NO.</b>	<b>Haringley LONDON</b>
MW-2021-02	



<p><b>KEY</b></p> <ul style="list-style-type: none"> <li> NEW Single Yellow Line</li> <li> NEW Double Yellow Line</li> <li> NEW Kerb Slip Markings</li> <li> NEW Parking Bay Markings</li> <li> NEW Dedicated Disabled Parking Bay Location</li> <li> NEW Disabled Parking Bay Location</li> <li> NEW Form Post with Sign</li> <li> REMOVE Single Yellow Line</li> <li> REMOVE Double Yellow Line</li> <li> REMOVE Kerb Slip Markings</li> <li> REMOVE Parking Bay Markings</li> <li> REMOVE Form Post with Sign</li> <li> Lamp Column with Sign</li> <li> Deepset Kerb/Crossover</li> </ul>	<p><b>LOCATION PLAN</b></p>	<p>Site Location: OUTSIDE NO. 44</p>	<p>Works: REMOVE DOUBLE YELLOW LINE</p>	<p>Notes:</p>	<p>SCALE: 1:200 @ A3</p> <p>DRAWN: DB CHECK: DB</p> <p>DATE DRAWN: 23/03/2021</p>	<p>BATCH NO. 1</p>
--	-----------------------------	--	---	---------------	---	--------------------

This is a preliminary drawing. It is not intended for construction. It is subject to change without notice. It is not to be used for any other purpose.

# Public Notice



### PROPOSED INTRODUCTION/AMENDMENT/REMOVAL OF WAITING AND LOADING RESTRICTIONS AND PARKING PLACES – VARIOUS LOCATIONS THE HARINGEY (WAITING AND LOADING RESTRICTION) (AMENDMENT NO. \*) ORDER 202\* AND VARIOUS CONTROLLED PARKING ZONE AMENDMENT ORDERS

T21

**Notice is hereby given** that the Council of the London Borough of Haringey proposes to make the above mentioned Orders under sections 6, 45, 46 and 124 of and Part IV of Schedule 9 to the Road Traffic Regulation Act 1984, as amended.

**The general effect of the Orders would be:-**

1. To extend:
  - (i) No Waiting at Any Time restrictions on Vartry Road N15 SOUTH WEST SIDE outside No.2/No.4 for approximately 3.2 metres (This will subsequently reduce the Permit Holders Only Mon-Fri 8am-6.30pm parking place).
  - (ii) No Waiting at Any Time restriction on Fortis Green N10 SOUTH SIDE for approximately 12.4 metres east of existing restrictions at Midhurst Avenue junction.
2. To convert: -
  - (i) No Loading 7am-10am and 4pm-7pm to No Loading at Any Time on Park Road N8 SOUTH WEST SIDE outside No.59 for approximately 11.8 metres.
  - (ii) Resident Permit Holders Only to No Waiting at Any Time on Cecile Park SOUTH EAST SIDE located approximately 30 metres north east from its junction with Crouch Hill for 3 metres.
  - (iii) No Waiting operating at zone hours to Permit Holders Only on Greyhound Road N17 SOUTH EAST SIDE outside No.60.
  - (iv) No Waiting at Any Time restriction to Permit Holders Only on Broadwater Road EAST SIDE between property No.73 and No.75.
  - (v) Pay by Phone bays to change from 2hrs max stay to 4hrs max stay on White Hart lane N17 SOUTH WEST SIDE from the eastern property boundary of No.325 south east for approximately 64 metres. Times will remain unchanged.
  - (vi) Permit Holders Only to shared use Permit Holders Only 8am-6.30pm/Event day Mon-Fri 8am-8.30pm Sat-Sun 8am-8pm and Pay by Phone max stay 4hrs no return in 1 hr on Gospatrick Road N17 SOUTH WEST SIDE outside No.131 to No.135. Tariff - £1.30 per hour.
  - (vii) Shared use Pay by phone Mon-Sat 8am-6.30pm max stay 3hrs no return in 2hrs/Resident Permit Parking Mon-Sat 8am-6.30pm to be converted to No Stopping Mon-Sat 8am-6.30pm except ambulances on Allison Road N8 SOUTH SIDE outside Medi-Parc clinic. Exemptions will apply to private ambulances registered with the Medi-Parc clinic.
3. To introduce: -
  - (i) No Loading at Any Time on Ashley Road N17: NORTH WEST SIDE from the Municipal Services Depot, south for approximately 11.7 metres. NORTH WEST SIDE from approximately 33.5 metres south of Municipal Services Depot, south for approximately 9 metres. NORTH WEST SIDE for approximately 27 metres opposite Harris Academy access. NORTH WEST SIDE for approximately 17 metres opposite Harris Academy exit. SOUTH EAST SIDE from the Municipal Services Depot, south for approximately 93 metres. SOUTH EAST SIDE for approximately 10 metres either side of the centre of Harris Academy access (inclusive of access). SOUTH EAST SIDE for approximately 10 metres north east of the centre of Harris Academy exit (inclusive of exit).
  - (ii) No Stopping Mon-Fri 8am-5pm on School Keep Clear on Ashley Road N17: SOUTH EAST SIDE approximately 37.1 metres in length north east of Harris Academy access and 63.2 metres in length south west of Harris Academy access.
  - (iii) Pay by Phone 8am-6.30pm/Event day Mon-Fri 8am-8.30pm Sat-Sun 8am-8pm max stay 4hrs no return in 1 hr on Gospatrick Road N17 SOUTH WEST SIDE outside No.137 to No.139. Tariff - £1.30 per hour.
4. To remove: -
  - (i) No Waiting at Any Time restrictions on Wood Vale N10 WEST SIDE outside No. 44

# Public Notice



- (ii) Permit Holders Only 8am-6.30pm/Event day Mon-Fri 8am-8.30pm Sat-Sun 8am-8pm on Gospatrick Road N17 SOUTH WEST SIDE outside No.137 to No.139.

Copies of the proposed Orders, and of the Council's statement of reasons for making the Orders, and plans showing the locations and effects of the Orders may be either: inspected by appointment at the Reception Desk, Alexandra House, 10 Station Road, Wood Green, London N22 7TR; or viewed online at [www.haringey.gov.uk/traffic\\_orders](http://www.haringey.gov.uk/traffic_orders); from the date of this Notice until the end of a period of six weeks from the date on the Orders are made, or the Council decides not to make the Orders.

Any person desiring to object to the proposed Orders or make other representation should send a statement in writing of either their objection and the grounds thereof or of their representation to the Traffic Management Group, River Park House, 1st floor, 225, High Road, Wood Green, N22 8HQ or to [traffic.orders@haringey.gov.uk](mailto:traffic.orders@haringey.gov.uk) quoting reference '2021-T21 by 9 June 2021.

Dated: 19 May 2021

Ann Cunningham  
Head of Highways and Parking

## APPENDIX 3

Dear all

I attach documents relating to proposed/made Traffic Orders and should be grateful for any objections or representations that you may have regarding any proposed permanent Orders within 21 days from the date of this email, and within 6 months from the in force dates for any experimental Orders. If I do not hear from you, I will assume that you have no comments to make.

Regards

**Paul Chambers**  
**Traffic Order Officer**

Haringey Council

Traffic Management Group, Alexandra House, 5th Floor, 10 Station Road, Wood Green, N22 7TR

T. 020 8489 5323

E. [paul.chambers@haringey.gov.uk](mailto:paul.chambers@haringey.gov.uk)